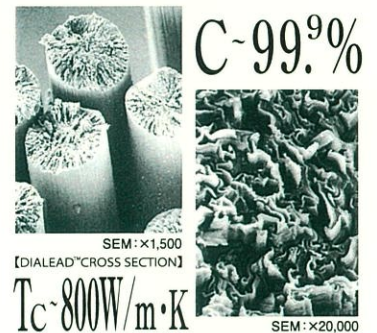

DIALEAD™

Mitsubishi Chemical Corporation has developed a high performance pitch-based carbon fiber (DIALEAD™), which is available in a large range of product formats, from low modulus to ultra high modulus grades. (DIALEAD™) is recognised worldwide as a composite material which gives big advantages for numerous applications.

PERFORMANCE

- High Purity
- High and Ultra High Modulus
- High Thermal Conductivity
- Excellent Handling Characteristics
- Proven Cost Advantage


GRADE
■ (DIALEAD™) STANDARD GRADE

	Grade [Unit]	Tensile Modulus [GPa]	Tensile Strength [MPa]	Elongation [%]	Density [g/cm ³]	Yield [g/1000m]	Thermal Conductivity [W/m·K]	ER [μΩm]
Continuous Fiber (2K, 6K Type)	K1352U	620	3600	0.6	2.12	270	140	6.6
	K1392U	760	3700	0.5	2.15	270	210	5.0
	K13C2U	900	3800	0.4	2.20	275	620	1.9
	K13C6U	900	3600	0.4	2.18	760	580	2.0
	K13D2U	935	3700	0.4	2.20	365	800	1.5
Continuous Fiber (12K, 16K Type)	K13312	420	3200	0.7	2.05	1550	110	8.0
	K63712	640	2600	0.4	2.12	2000	140	6.6
	K13916	760	3000	0.4	2.15	2200	200	5.1
	K63A12	785	2600	0.3	2.15	1950	220	4.7
Chopped Fiber	K223Y1	50	1000	1.8	1.5	—	—	—
	K223SE	185	2350	1.1	2.0	—	—	—
	K223HE	900	3800	0.3	2.2	—	550	—
	K6371T	640	2600	0.4	2.1	—	140	—
Milled Fiber	K223HM	900	3800	—	2.2	—	550	—
	K6371M	640	2600	—	2.1	—	140	—

DIALEAD CARBONFIBER PREPREG

高彈性:65T-80T

品番	彈性率	厚度(mm)	RC(%)	纖維基重(g/m ²)	PPG基重(g/m ²)	卷長(m)/ROLL
HYEJ05M80D-32	80TON	0.043	32	50	73.5	100
HYEJ06M80D-32		0.051	32	60	88.2	100
HYEJ07M80QD-32		0.064	32	75	110.3	100
HYEJ10M80QD-20		0.067	20	100	125	100
HYEJ10M80QD-25		0.074	25	100	133.3	100
HYEJ10M80QD-37		0.095	37	100	158.7	100
HYEJ12M80QD-20		0.084	20	125	156.3	100
HYEJ12M80QD-25		0.093	25	125	166.7	100
HYEJ12M80QD-32		0.107	32	125	183.8	100
HYEJ15M80QD-25		0.111	25	150	200	100
HYEJ15M80QD-32		0.129	32	150	220.6	100
HYEJ17M80QD-25		0.13	25	175	233.3	100
HYEJ20M80QD-25		0.149	25	200	266.7	100
HYEJ28M80QD		0.24	32	280	411.8	50
HYEJ56M80QD		0.48	32	560	823.5	30
HYEJ10M65PDH-20		65TON	0.068	20	100	125
HYEJ10M65PD-25	0.075		25	100	133.3	100
HYEJ10M65PD-37	0.096		37	100	158.7	100
HYEJ12M65PDH-20	0.085		20	125	156.3	100
HYEJ12M65PD-25	0.094		25	125	166.7	100
HYEJ12M65PD-32	0.108		32	125	183.8	100
HYEJ15M65PD-25	0.112		25	150	200	100
HYEJ15M65PD-32	0.13		32	150	220.6	100
HYEJ17M65PD-25	0.131		25	175	233.3	100
HYEJ17M65PD-32	0.151		32	175	257.4	100
HYEJ34M65PD	0.294		32	340	500	50