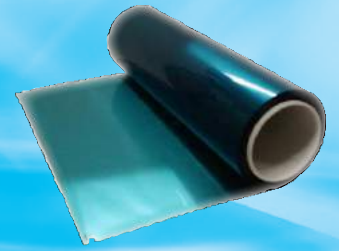


# Dry Film Photoresist 噴砂用

## MS 7000

## MS 8000



### 噴砂用高耐性光阻

極佳阻抗表現

Great Resistance Performance!

高解析

High Resolution!

室溫下容易剝離

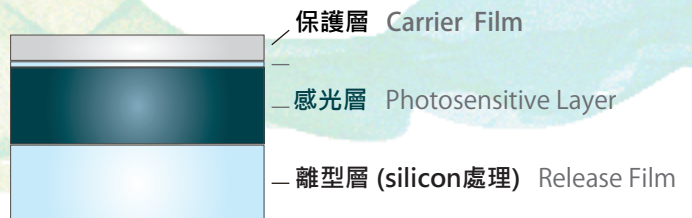
Easy to Peel Off under Room Temperature!

## MS 7000 series

直接法 For Direct Method

## MS 8000 series

間接法 For Indirect Method

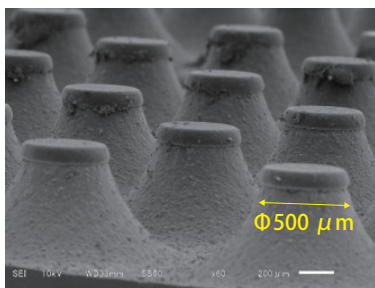


型號 Type	光阻厚度 Thickness of Resist Layer
MS 7100	100 $\mu\text{m}$
MS 7050	50 $\mu\text{m}$

型號 Type	光阻厚度 Thickness of Resist Layer
MS 8100	100 $\mu\text{m}$
MS 8050	50 $\mu\text{m}$

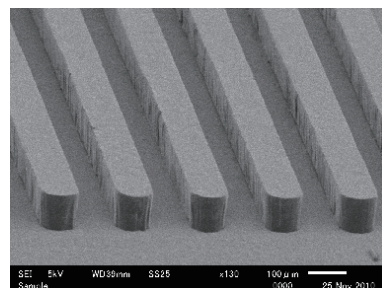
### 圖形 Image

MS 7100 Pin Stand (Glass)



噴砂深度: 700  $\mu\text{m}$

MS 7100 立膜顯影 Resist Pattern



L/S = 100/100  $\mu\text{m}$